

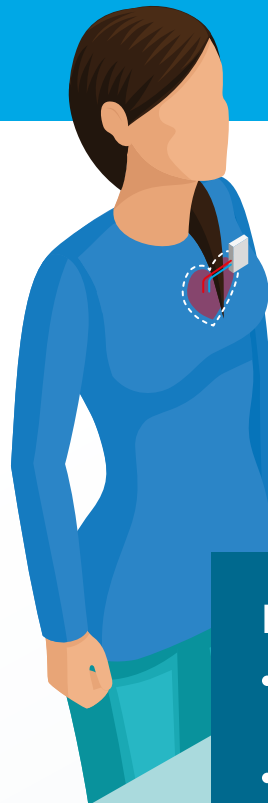
# DataLinQ® RDM Cloud

## Optimized Management of CIED remote transmissions

### Alleviate the burden on patient management and hospital IT infrastructure.

Save time by bringing in-clinic follow-ups and remote patient monitoring together with DataLinQ. Manage all transmissions and alerts from five major vendors in one system, streamlining workflows and eliminating unnecessary tasks.

- Continuously synchronize vendor portals with DataLinQ CRM, ensuring that transmissions appear the same in every environment.
- Transmissions processed in DataLinQ are automatically archived in the vendor portals.
- Navigate directly to vendor portals from DataLinQ CRM whenever a deep dive is needed, allowing quick access to additional transmission details.
- Track disconnected patients and devices across all vendor portals



#### DataLinQ RDM Inbox

- **Easy:** Process and manage remote transmissions from all vendors in one go
- **Insightful:** structured data through intuitive user interface
- **Automated:** custom reporting to your EMR
- **Extra:** functionalities to divide work for teams.

#### Remote Device Management

Abbott  
Merlin.net™ PCN

BIOTRONIK  
Home Monitoring®

# This is why you use DataLinQ RDM Cloud

## RDM managed by DataLinQ RDM Cloud

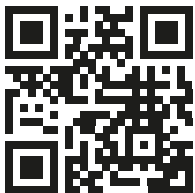
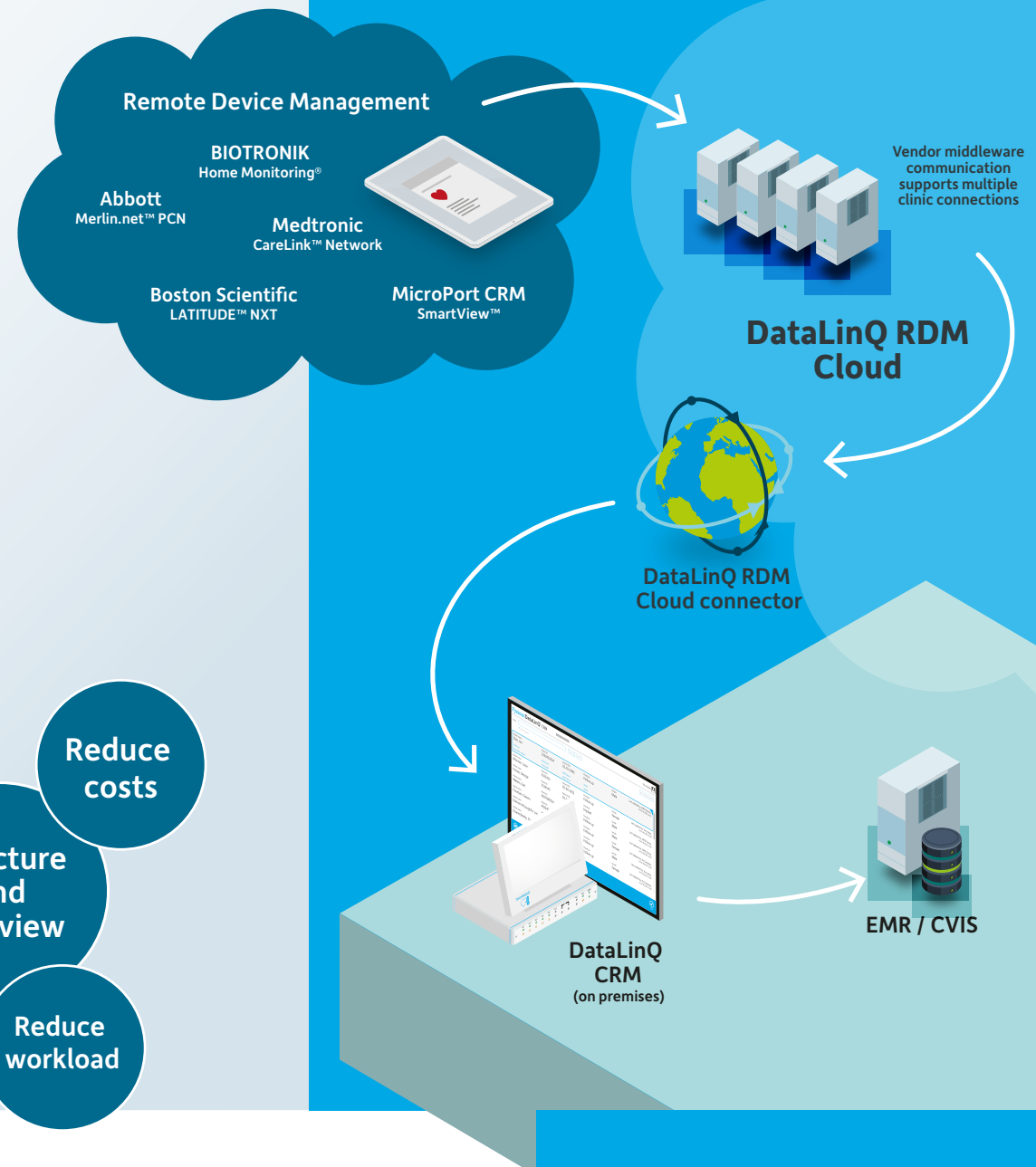
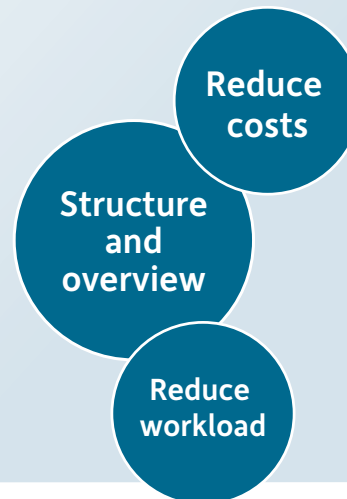
### Secure and Reliable

With DataLinQ, security is built in from the start. A single connection covers all five vendors, ensuring a safe and seamless data flow. Fysicon continuously tracks portals, transmissions, and connectivity, preventing lost data and ensuring everything is accurately processed. All required infrastructure - servers, integrations, and software - is provided, eliminating the need for any hospital IT involvement.

### Easy Setup

Getting started is effortless. As a fully managed system, DataLinQ RDM Cloud requires no complex setup and is operational within a day. It seamlessly integrates with the hospital's EMR via DataLinQ CRM, providing automatic data entry and custom reporting.

**DataLinQ® RDM Cloud**  
**One system, one workflow.**  
**Simple, safe, and fully automated!**



### More information?

If you would like to know more about what DataLinQ can do for you, request a demo. Visit: [fysicon.com/datalinq](https://fysicon.com/datalinq)



**Fysicon**  
creating medical solutions

A CANON GROUP COMPANY